

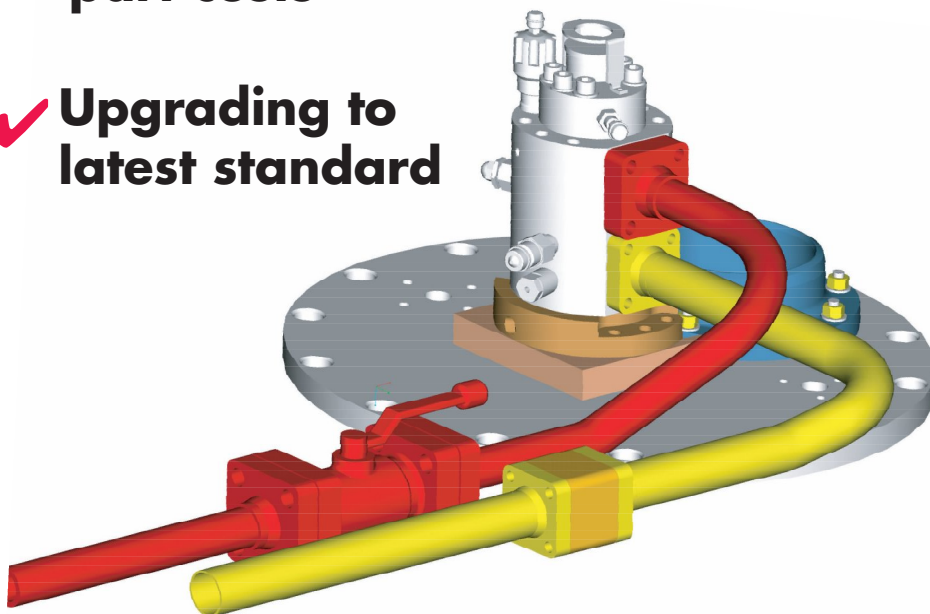
Service Bulletin

Keep you up to date with the latest news from Frank Mohn Services AS

## Replacement of FCV to STC valves

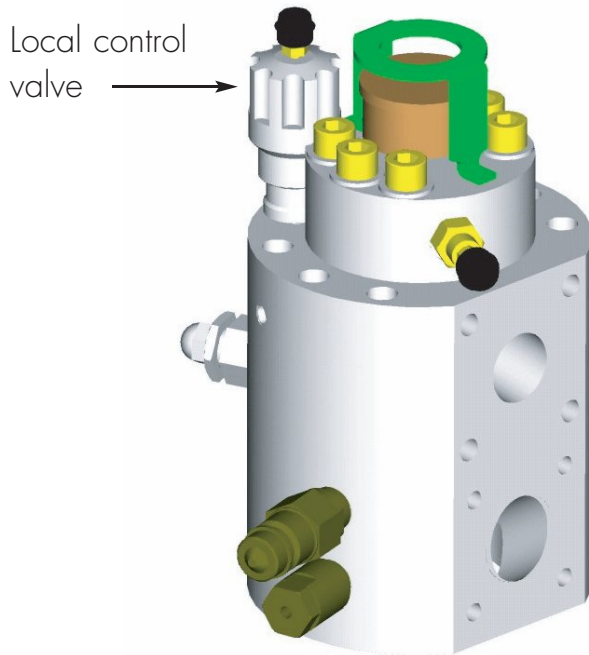


- ✓ **Reduced maintenance**
- ✓ **Reduced spare part costs**
- ✓ **Upgrading to latest standard**



## Dear Customer!

The Speed Torque Control Valve (STC) has been standard on the Framo cargo pumps since 1996. The valve is made of stainless steel and so is the new generation local control valve, integrated in the STC valve.



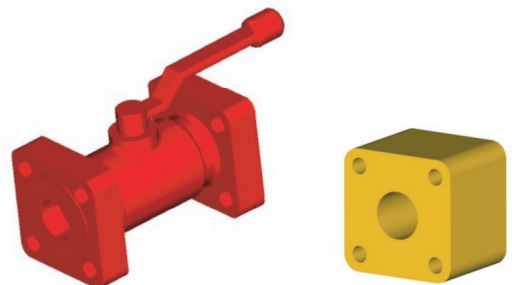
The previous type Flow Control Valves (FCV) are only used as replacement for valves of the same type and thus only a limited volume is manufactured per year.

From 2004 the production of FCV valves will terminate. However, reconditioning of valves will still be possible.

An adaptor plate has been made in order to fit the new STC valve, where a FCV has been installed originally.

The present standard on all newbuildings is that the service valves for each cargo pump are also made of stainless steel.

Mild steel ball valves, non-return valves and local control valves are recognised to be components with a high degree of required maintenance. If renewal of previous type FCV valves becomes necessary, replacement by the new type STC valve including stainless steel service valves will be beneficial in the long run. This will eliminate corrosion problems, and will implement the new type local control valve. In other words you will get rid of these items as maintenance parts.

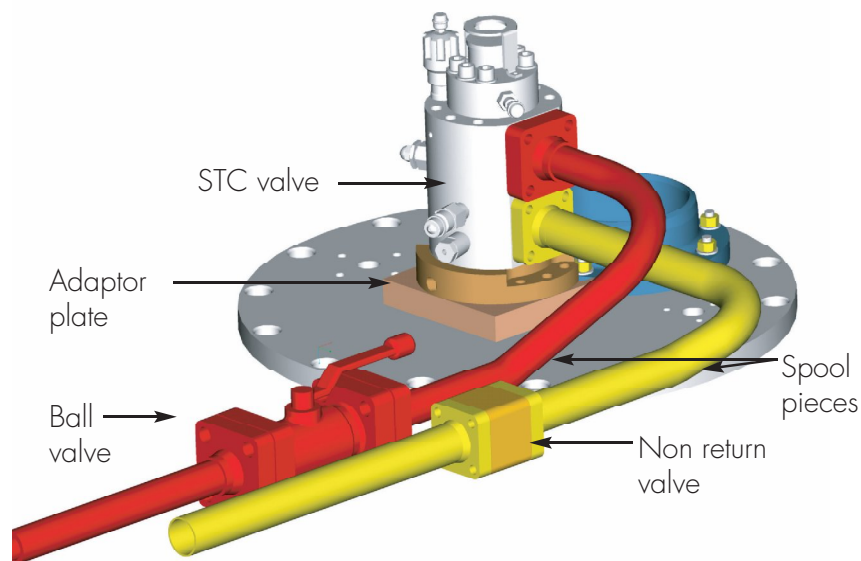


We have now a replacement package available, including stainless steel spool pieces between the service valves and the control valve. Please note that the spool pieces have to be tailor made for each pump.

This package include the following parts:

- STC valve with local control valve
- Adaptor plate
- St. steel ball valve
- St. steel non return valve
- Spool piece – high pressure side
- Spool piece – return side
- Set of bolts, nuts and seals

These items will be basically maintenance free.



**For further information,  
please contact Frank Mohn Services AS – Spare Part Dept.  
or the same department at any of our subsidiaries abroad.**



## Frank Mohn Services AS

**Head office: Frank Mohn AS, P.O. Box 98 Slåtthaug, 5851 Bergen, Norway, Phone: + 47 55 99 90 00, Telefax: + 47 55 99 93 80**

Frank Mohn Flatøy AS, Flatøy, 5918 Frekhaug, Norway, Phone: + 47 55 99 94 00, Telefax: + 47 55 99 95 81

Frank Mohn Fusa AS, P.O. Box 10, 5641 Fusa, Norway, Phone: + 47 55 99 96 00, Telefax: + 47 55 99 97 80

Frank Mohn Services AS, P.O. Box 44 Slåtthaug, 5851 Bergen, Norway, Phone: + 47 55 99 92 00, Telefax: + 47 55 99 93 82

Framo Engineering AS, P.O. Box 174 Sandsli, 5862 Bergen Norway, Phone: + 47 55 92 88 00, Telefax: + 47 55 92 89 00

Frank Mohn Nederland BV, Edisonweg 18, P.O. Box 305, 3200 AH Spijkenisse, The Netherlands, Phone: + 31 181 619311, Telefax: + 31 181 611193

Frank Mohn Houston Inc, 1802 West D Street, La Porte, Texas 77571-4601, USA, Phone: + 1 281 471 7920, Telefax: + 1 281 842 5450

Frank Mohn Singapore Pte Ltd, 17 Tuas View Circuit, Singapore 637575, Phone: + 65 6210 2400, Telefax: + 65 6210 2401

Frank Mohn AS Sweden Office, Askims Industriväg 1A, 43634 Askim, Sweden, Phone: + 46 31 682085, Telefax: + 46 31 681048

Frank Mohn Nippon K.K., City-haz Chojamachi Building 6 - 3, Chojamachi 2-chome, Naka-ku, Yokohama 231-0033, Japan, Phone: + 81 45 253 7155, Telefax: + 81 45 253 7188

Frank Mohn Korea Office, Rm. 309, Yachting Center Bldg., 1393, Woo-1 Dong, Haeundai-Ku, Pusan, Korea, Phone: + 82 51 743 6942, Telefax: + 82 51 743 6944

Frank Mohn China Ltd, Unit 1008 Pine City, 8 Dong An Road, Shanghai 200032, China, Phone: +86 21 6443 8845, Telefax: +86 21 6443 8846

Frank Mohn do Brasil Ltda. Av. Presidente Vargas, 463 - 19º andar, Edifício Banita 20071-003 - Rio de Janeiro - RJ Brazil Phone: + 55 21 2507 7898 Telefax: + 55 21 2507 7888